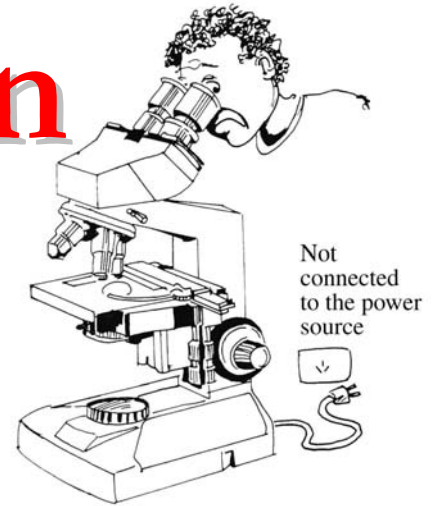


Quality Smear Preparation for AFB



*A Visual Guide for
TB Laboratory workers on the front line*

First Printing: September 2005

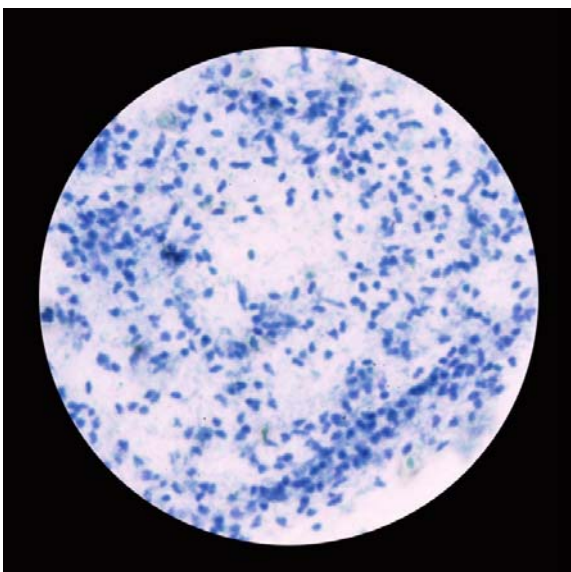
Author: Akiko Fujiki

Published by: The Research Institute of Tuberculosis, JATA

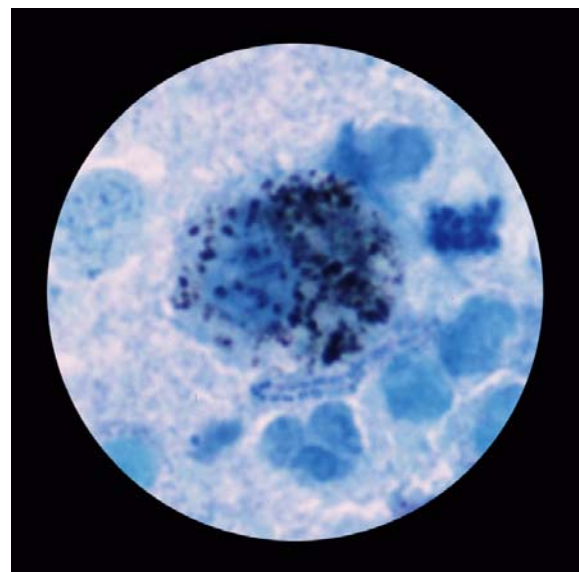
3-1-24 Matsuyama, Kiyose, Tokyo 204-8533, JAPAN

(Mail address: inter@jata.or.jp)

Price: US\$20



Leucocytes (X 100)



Dust cell (X 1,000)

Contents

Author' s Note

Sputum Quality Check by microscopic observation

Smear Area Size and Evenness by macroscopic and microscopic observation

Thickness of Smear by macroscopic and microscopic observation

Staining by Ziehl-Neelsen Method by microscopic observation

Checking of smear thickness before staining

Acid Fast Bacilli

Good and Poor Smears by Appearance

Physical Appearance of Sputum Specimens